

User Guide

PVR



Contents

PAUSING A LIVE PROGRAM	4
REWINDING A LIVE PROGRAM	4
OPEN THE PVR MENU	6
VIEW A RECORDED PROGRAM	7
RECORDED PROGRAM PARENTAL CONTROLS	8
RECORDED PROGRAM INFORMATION	9
PAUSING A RECORDING	10
FAST FORWARDING A PROGRAM	10
REWINDING A PROGRAM	12
STOPPING A PROGRAM	12
RESUMING A PROGRAM	13
LOCKING A PROGRAM	15
UNLOCKING A PROGRAM	17
DELETING A RECORDED PROGRAM	18
RECORDING A PROGRAM	20
CANCELING A RECORDING	22
SCHEDULE A RECORDING	23
RECORDING A PROGRAM USING THE REMOTE	25
STOPPING A RECORDING USING THE REMOTE	25
SCHEDULING A RECORDING IN PVR MENU	26
CANCELLING A SCHEDULED RECORDING	28
RECORD HISTORY	30
VIEWING DELETED RECORDING HISTORY	31



PSCtv User Guide

PAUSING A LIVE PROGRAM

1. To pause any program you are watching, press the **PAUSE** button ||.



Figure 1

2. The Pause icon || will be displayed in the upper left hand corner.
(See Figure 1)
3. To restart the program, press the **PAUSE** button again or press the **PLAY** button ►.



REWINDING A LIVE PROGRAM

1. Press the **REWIND** button ◀◀ on the remote.



PSCtv User Guide



Figure 2

2. The **Rewind** icon ◀◀ will appear in the upper left of the screen.
(See *Figure 2*)

NOTE: Pressing the **Rewind** icon again will increase the Rewind speed. Rewind speed options are 2x, 4x, 10x and 25x normal viewing speed.

3. The **Indicator Bar** icon displays the a visual indicator of the length of the rewind available.

NOTE: The PVR records live TV only on the channel currenty being viewed. The maximum length of time a program can be rewind is one hour. The amount of rewinding available depends on the amount of time the viewer has been watching that same channel.

NOTE: The PVR deletes all live TV recording information when the user changes the channel and begins recording the information from the new channel.



PSCtv User Guide

OPEN THE PVR MENU

1. Press the **MENU** button.
2. The Electronic Program Guide will appear at the top of the screen.



Figure 3

3. Use the **ARROW** buttons to highlight the **PVR** icon. (See Figure 3)
4. Press the **OK** button.



Figure 4

5. The main PVR menu will be displayed. (See Figure 4)

PSCtv User Guide



VIEW A RECORDED PROGRAM

1. Open the PVR Menu (see Page 4)



Figure 5

2. Use the **ARROW** buttons to highlight the **Recordings** icon. (See Figure 5)
3. Press the **OK** button.
4. A list of recordings will be displayed.



Figure 6

5. Use the **ARROW** buttons to scroll up and down through the list of recordings and highlight the desired recording. (See Figure 6)
6. Press the **OK** Button.
7. Use the **ARROW** buttons to highlight the **Play Recording** icon. (See Figure 6)

PSCtv User Guide



Figure 7

8. Press the **OK** button.

RECORDED PROGRAM PARENTAL CONTROLS

Parental Control settings for PSCtv are also in effect for users when they attempt to view recorded programs on the PVR. For information on setting Parental Controls, see the Setting Parental Controls in the PSCtv User guide.

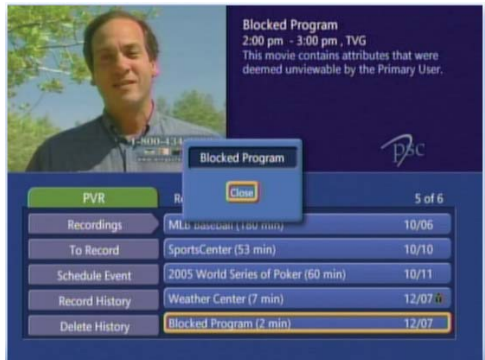


Figure 8

1. When a user attempts to access recordings blocked by Parental

PSCtv User Guide



Controls, the recording information only shows the length of the recording and the date recorded.

2. If a user tries to play a recorded program blocked by Parental Controls, a Blocked Program screen is displayed. (See *Figure 8*)
3. Use the **ARROW** buttons to highlight the **Close** icon.
4. Press the **OK** button.

RECORDED PROGRAM INFORMATION

1. While watching a program recorded on the PVR, press the **INFO** button on the remote.



Figure9



2. The information about the program will be displayed and a green **PVR** icon will be displayed on the right of the program information. (See *Figure 9*)

PSCtv User Guide

PAUSING A RECORDING

1. While viewing a recorded program on the PVR, press the **PAUSE** button **||** on the Remote. The Pause progress bar will be displayed. (See Figure 10)



Figure 10

2. To restart the program, press the **PAUSE** button again or press the **PLAY** button **▶**.



FAST FORWARDING A PROGRAM

1. While viewing a Recorded Program, press the **FAST FORWARD** button **▶▶** on the remote.



Figure 11

2. The **Fast Forward** icon will appear in the upper left of the screen.
(See Figure 11)

NOTE: Pressing the **Fast Forward** icon again will increase the Fast Forward speed. Fast Forward speed options are 2x, 4x, 10x and 25x normal viewing speed.



3. The **Indicator Bar** icon displays a visual indicator of the current location within the length of the program.
4. The **Timer** icon in the upper right corner of the screen will indicate the time lapse during the fast forward process.
5. To stop Fast Forwarding the program, press the **STOP** button ■ or the **PLAY** ► button on the remote.

PSCtv User Guide

REWINDING A PROGRAM

1. While viewing a Recorded Program, press the **REWIND** button ◀◀ on the remote.



Figure 12

2. The **Rewind** icon will appear in the upper left of the screen. (See Figure 12)



NOTE: Pressing the **Rewind** icon again will increase the Rewind speed. Rewind speed options are 2x, 4x, 10x and 25x normal viewing speed.

3. The **Indicator Bar** icon displays a visual indicator of the current location within the length of the program.
3. The **Timer** icon in the upper right corner of the screen will indicate the time lapse during the fast forward process.
4. To stop Rewinding the program, press the **STOP** button ■ or the **PLAY** ► button on the Remote.

STOPPING A PROGRAM

1. Press the **STOP** button ■ on the remote.

PSCtv User Guide



Figure 13

2. The program will stop and the info bar will be displayed at the bottom of the channel being viewed prior to starting the PVR recorded program. (See Figure 13)

RESUMING A PROGRAM



1. Open the PVR Menu. (See Page 4)



Figure 14

2. Use the **ARROW** buttons to highlight the **Recordings** icon. (See Figure 14)

PSCtv User Guide

3. Press the **OK** button.



Figure 15

- 4. Use the **ARROW** buttons to select a program that was stopped before it completed. (See Figure 15)
- 5. Press the **OK** button.



Figure 16

- 6. Use the **ARROW** buttons to highlight the **Resume Play** icon. (See Figure 16)
- 7. Press the **OK** button.





LOCKING A PROGRAM

NOTE: Locking a program will ensure that the selected recording will not be automatically deleted when the storage drive becomes full.

1. Open the PVR Menu. (See Page 4)



Figure 17



2. Use the **ARROW** buttons to highlight the **Recordings** icon. (See Figure 17)
3. Press the **OK** button.



Figure 18

PSCtv User Guide

4. Use the **ARROW** buttons to select a program to lock. (See Figure 18)
5. Press the **OK** button.



Figure 19

6. Use the **ARROW** buttons to highlight the **Lock** icon. (See Figure 19)
7. Press the **OK** button.



Figure 20

8. The Locked program is indicated on the right by the small **Lock** icon just after the Date Recorded information for that program. (See Figure 20)

PSCtv User Guide



UNLOCKING A PROGRAM

1. Open the PVR Menu (See Page 4)



Figure 21

2. Use the **ARROW** buttons to highlight the **Recordings** icon. (See Figure 21)
3. Press the **OK** button.



Figure 22

4. Use the **ARROW** buttons to highlight the program to be unlocked. (See Figure 22)
5. Press the **OK** button.

PSCtv User Guide



Figure 23

6. Use the **ARROW** buttons to highlight the **Unlock** icon. (See Figure 23)
7. Press the **OK** button.
8. The program should now be unlocked and the small **Lock** icon beside the Record Date should no longer be visible.



DELETING A RECORDED PROGRAM

1. Open the PVR Menu (See Page 4).



Figure 24

2. Use the **ARROW** buttons to highlight the **Recordings** icon. (See Figure 24)

PSCtv User Guide



3. Press the **OK** button.



Figure 25

4. Use the **ARROW** buttons to highlight the program to be deleted.
(See Figure 25)
5. Press the **OK** button.

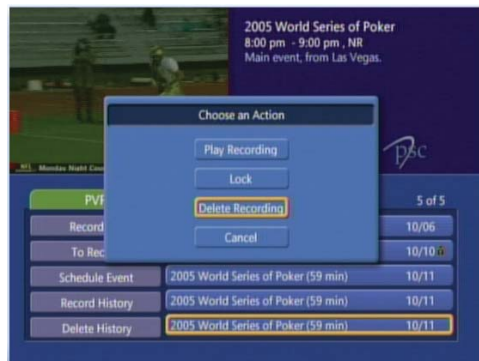


Figure 26

6. Use the **ARROW** buttons to highlight the **Delete Recording** icon.
(See Figure 26)
7. Press the **OK** button.

PSCtv User Guide



Figure 27

8. A Confirmation Message will appear. (See Figure 27)
9. Verify that the program to be deleted is the correct one.
10. Use the **ARROW** buttons to highlight the **Yes** icon.
11. Press the **OK** button.



RECORDING A PROGRAM

1. Open the Program Guide by pressing the **GUIDE** button on the remote.



Figure 28

PSCtv User Guide



2. Use the **ARROW** buttons to highlight the program to be recorded.
(See Figure 28)
3. Press the **OK** button.

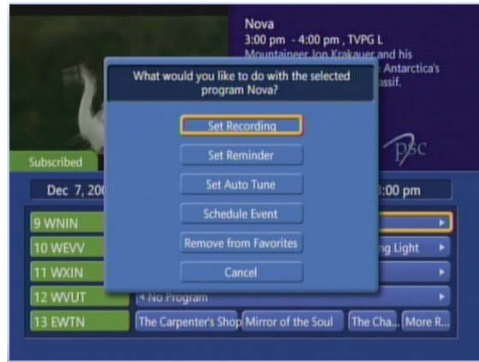


Figure 29

4. Use the **ARROW** buttons to choose the **Set Recording** icon. (See Figure 29)
5. Press the **OK** button.



Figure 30

6. There is now a **Red Recording** icon next to the program to be recorded. (See Figure 30)

PSCtv User Guide

CANCELING A RECORDING

1. Press the **GUIDE** button to open the **Program Guide**.



Figure 31

2. Use the **ARROW** buttons to highlight the program with the **Recording** icon to cancel. (See Figure 31)
3. Press the **OK** button.

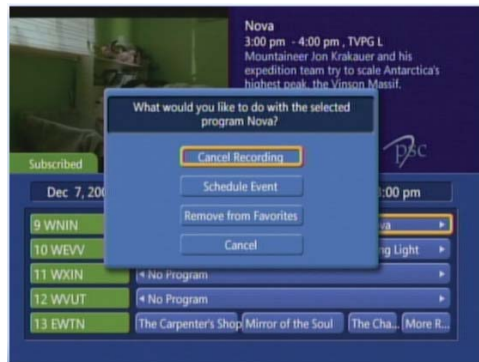


Figure 32

4. Use the **ARROW** buttons to highlight the **Cancel Recording** icon. (See Figure 32)
5. Press the **OK** button.

PSCtv User Guide



SCHEDULE A RECORDING

1. Open the Program Guide by pressing the **GUIDE** button.



Figure 33

2. Use the **ARROW** buttons to highlight the program to be recorded.
(See Figure 33)
3. Press the **OK** button.

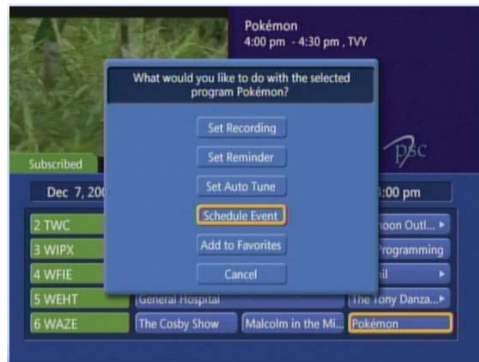


Figure 34

4. Use the **ARROW** buttons to highlight the **Schedule Event** icon. (See Figure 34)
5. Press the **OK** button.

PSCtv User Guide

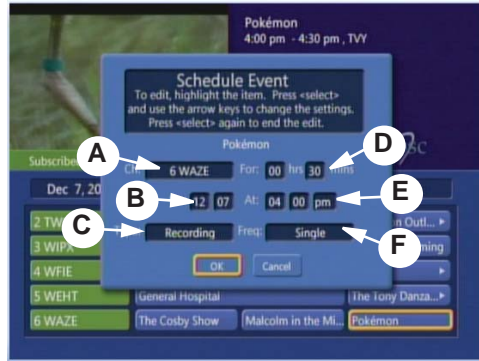


Figure 35

1. Use the **ARROW** buttons to highlight any field to change. (See Figure 35) The fields are:
 - A. Channel
 - B. Date program will run.
 - C. Type of Reminder – Press the **OK** button to show options (choose Recording)
 - D. Length of Time program will run
 - E. Start time of show.
 - F. Frequency of program – Press the **OK** button to show options (Every Day, Every M-F, Single, Weekly)
2. Use the **ARROW** buttons to highlight the **OK** icon.
3. Press the **OK** button.



RECORDING A PROGRAM USING THE REMOTE

1. Use the program guide to locate the program to be recorded.
2. While viewing the program, press the **RECORD** button ● on the remote.



Figure 36

3. A **Red Record** icon will appear in the lower right of the screen. (See Figure 36)

STOPPING A RECORDING USING THE REMOTE

1. Press the **STOP** button ■ on the remote.



Figure 37

2. A message will appear stating, "Recording in progress. Would you like to stop recording?" (See Figure 37)
3. Use the **ARROW** buttons to highlight the **Yes** icon.
4. Press the **OK** button.

PSCtv User Guide

SCHEDULING A RECORDING IN PVR MENU

1. Open the PVR Menu (See Page 4)



Figure 38

2. Use the **ARROW** buttons to highlight the **Schedule Event** icon. (See Figure 38)



Figure 39

3. Choose the Channel, Length of the Recording, Date and Time. (See Figure 39)
4. Use the **ARROW** buttons to highlight the item to be changed.
5. Press the **OK** button to show options or type in selection using the **NUMBER/LETTER** buttons on the remote.

PSCtv User Guide

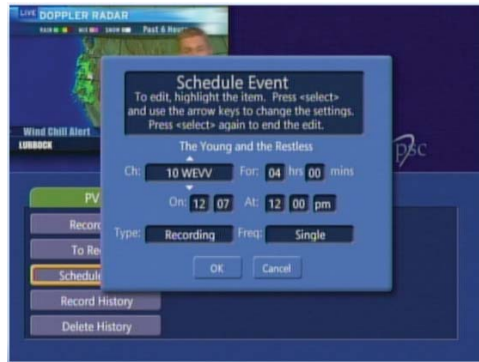


Figure 40

6. Use the **ARROW** buttons to scroll and locate the required selection. (See Figure 40)
7. Press the **OK** button to select the item.



Figure 41

8. Make sure the Type field has the **Recording** icon selected. (See Figure 41)



PSCtv User Guide



Figure 42

9. Use the **ARROW** buttons to highlight the **OK** icon. (See Figure 42)
10. Press the **OK** button.

CANCELLING A SCHEDULED RECORDING

1. Open the PVR Menu (See Page 4)



Figure 43

2. Use the **ARROW** buttons to highlight the **To Record** icon. (See Figure 43)
3. Press the **OK** button.

PSCtv User Guide



Figure 44

4. A list of programs that are scheduled for recording will appear. (See Figure 44)
5. Use the **ARROW** Buttons to highlight the Event to be changed.
6. Press the **OK** button.



Figure 45

7. Use the **OK** buttons to select the **Cancel Recording** icon. (See Figure 45)
8. Press the **OK** button.



PSCtv User Guide

RECORD HISTORY

1. Open the PVR Menu (See Page 4)



Figure 46

2. Use the **ARROW** buttons to highlight the **Record History** icon. (See Figure 46)
3. Press the **OK** button.



Figure 47

4. A list of all recording activity will be displayed. (See Figure 47)
5. Use the **ARROW** buttons to scroll through the information.



VIEWING DELETED RECORDING HISTORY

1. Open the PVR Menu (See Page 4)



Figure 48

2. Use the **ARROW** buttons to highlight the **Delete History** icon. (See Figure 48)
3. Press the **OK** button.

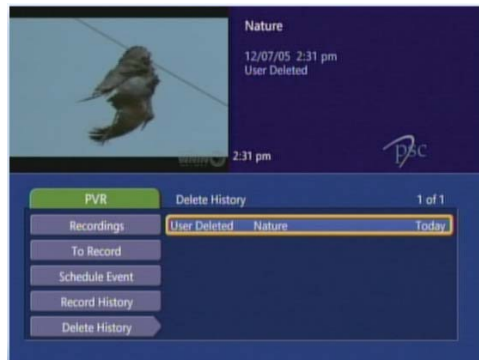


Figure 49

4. A list of the deleted recordings will be displayed. (See Figure 49)
5. Use the **ARROW** buttons to scroll through the information.



*p*sc *tv*

11877 E State Road 62
Saint Meinrad, IN 47577
357-2123 536-3344 843-5951
www.psci.net